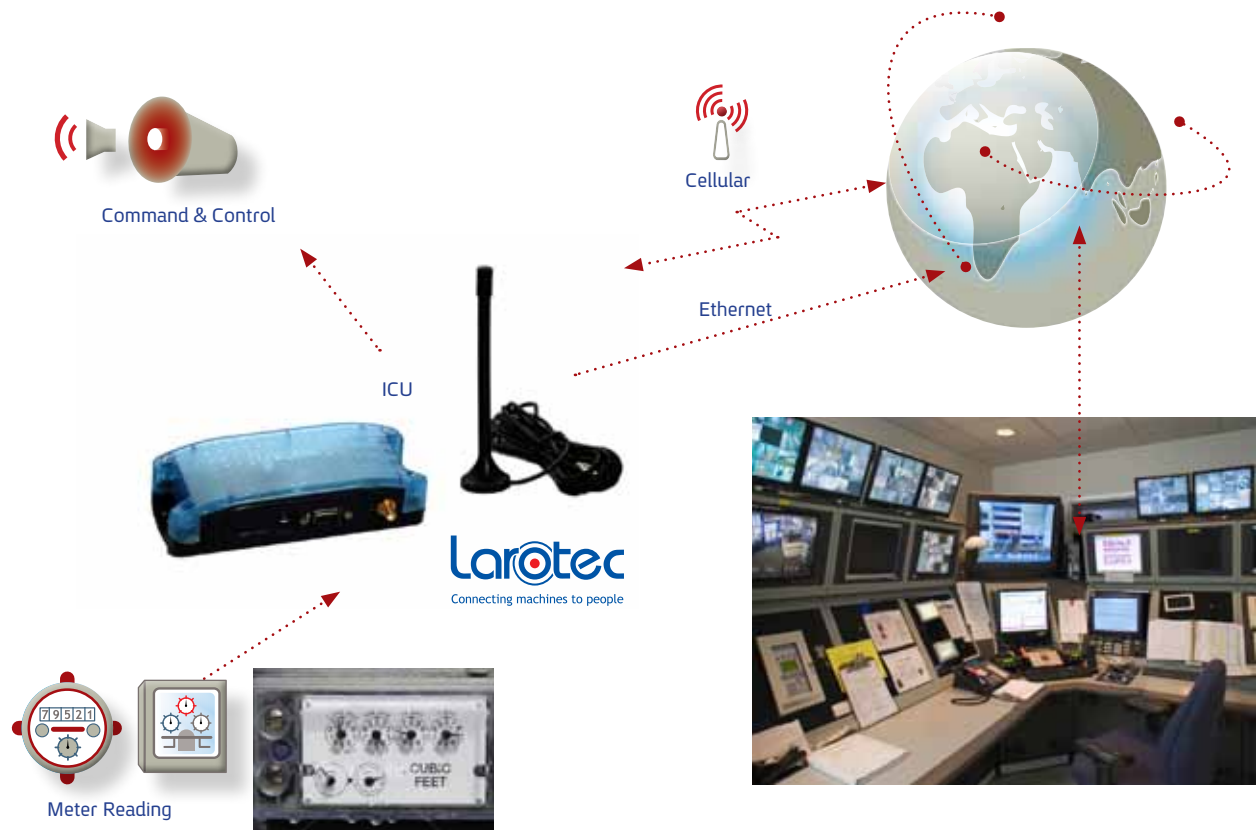


Mini SCADA Meter Reading System



- Take full control of resource management
- Improve efficiency, reduce expenses and energy, water, and manpower consumption
- Comprehensive, web-based, end-to-end mini-SCADA solutions with server-based graphical presentation
- Remote meter reading, security, and alarm capabilities for energy, water, traffic and street light applications



- Larotec offers comprehensive, end-to-end solutions for mini-SCADA systems that enable monitoring and control of field equipment, such as air conditioning units, motors, intrusion alarm switches, sensors, lights, etc.
- Typical applications include remote meter reading, security systems, public / industrial alarm systems, energy management and water/waste water applications.
- Each Interface Communication Unit (ICU) provides overall monitoring and control as well as reports on cellular reception quality of the unit itself.
- This versatile system can utilize a number of cellular links and/or Ethernet connections to the server database.
- The web-based application enables convenient and efficient data transfer and user access

The Larotec system can support a variety of applications to fulfill customer needs.

Thousands of Larotec units are in use worldwide monitoring and controlling water, electricity, sub-metering, alarm systems, etc.

The ICU field unit is an advanced wireless mini-SCADA Remote Terminal (RTU) that features powerful connectivity and interfacing capabilities for a wide range of field equipment.

The system enables, not just monitoring, but control over output commands, local process capabilities and data-logger functions

Communication between ICUs and the Internet Server Gateway (ISG) can be accomplished via a built-in cellular radio or Ethernet connection to any wired or wireless link.

The ICU reports on cellular reception quality, warning of

possible communication problems in marginal coverage areas.

The data from the field equipment can be sent to the server on a predetermined basis or in response to a ISG polling request.

- System monitoring and control is provided by a web-based application that enables user access "from anywhere to anywhere"

- Real-time and historical data provided by the Larotec system can be used to improve resource management.

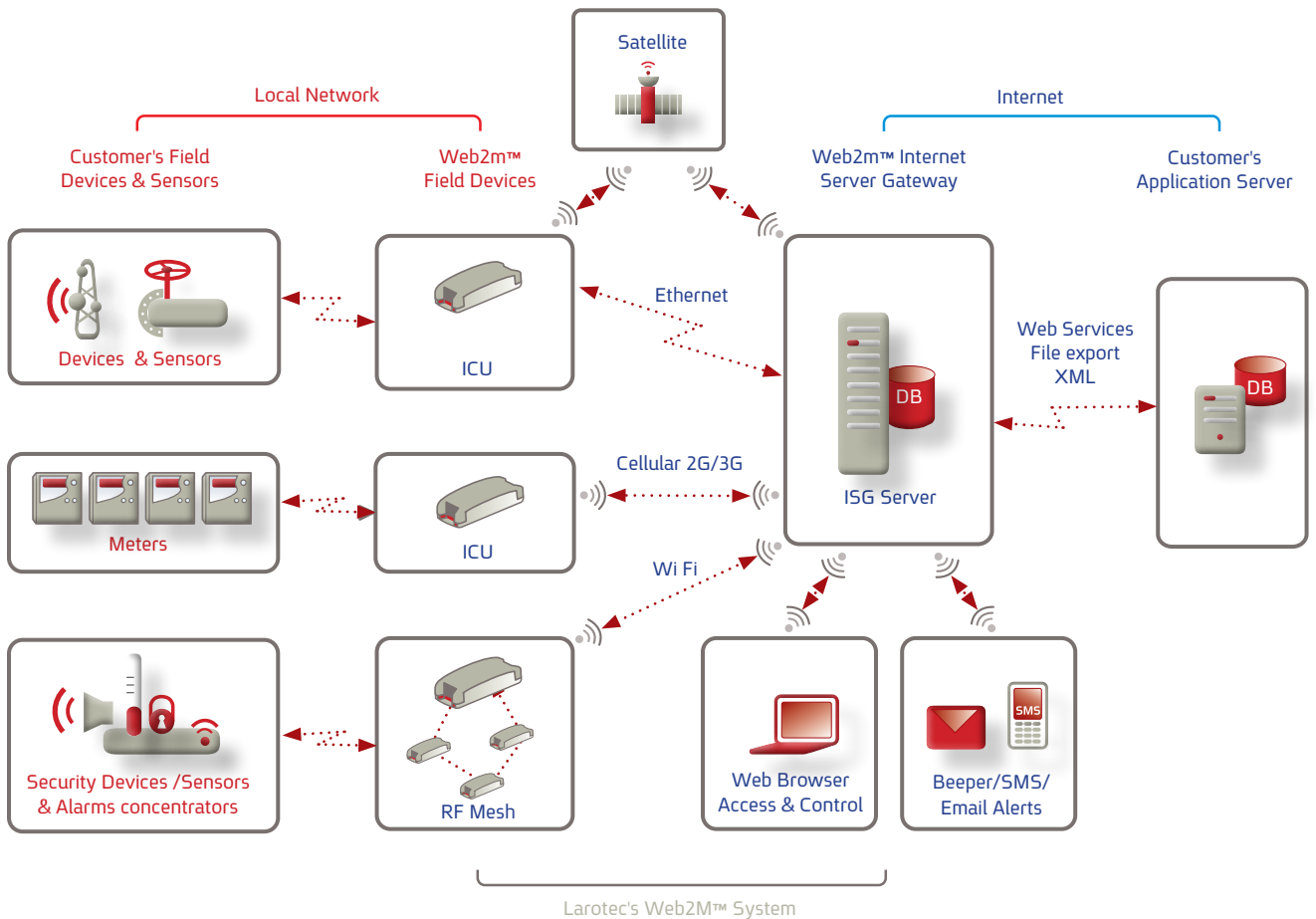
The Larotec system is ideal for meter reading. Real-time meter reading data enables cost savings and productivity improvements for electric utilities.

Using the Larotec system reduces expenses, avoids penalties and boosts customer service.

Larotec is ready to go the "extra mile" to meet customer needs.



System Architecture



The Larotec system provides

- An advanced, wide-area, smart remote metering system
- Simultaneous connectivity to a wide range of field equipment; meters, sensors, switches, sirens, valves etc. via the Interface Communication Unit (ICU).
- Integrated cellular and Ethernet communications.
- The option for hosting either on **Larotec** global server or on the customer's server
- A comprehensive web-based, end-to-end solution with a proven worldwide installed base
- Field-proven successful implementation worldwide
- Short-term Return On Investment (ROI)

Company profile

Beeper was established in 1988 by Motorola Israel Ltd. and Beeper-Pagecall.

Beeper is a leading communication provider for public safety organizations, including emergency services. After several decades in this field, Beeper understands its customers' needs and provides them with high-level and reliable communication services in the private and governmental sectors.

Beeper also employs hundreds of call-center operators to provide 24/7 answering services to accommodate incoming calls for customers using Beeper services.

Larotec is a division of the Beeper group that specializes in the development, manufacturing and implementation of a variety of remote monitoring and control solutions for such applications as automatic meter reading, alarm systems, mini-SCADA applications, earthquake early warning systems and many more.

Thousands of remote sites employ Larotec end-units (ICU) for a wide range of applications worldwide.

Our commitment

Beeper group is committed to total customer satisfaction. Our long-term experience in meeting customer expectations have established Beeper group as a leading company in the communication field both nationally and internationally.

Beeper and its employees are fully committed to maintaining our technological edge and to meeting our customers' on-going needs for better and more cost-effective solutions.